

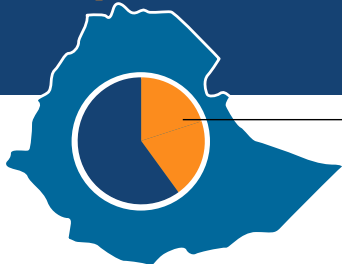


TRAIDE

Poultry sector in Ethiopia Factsheet

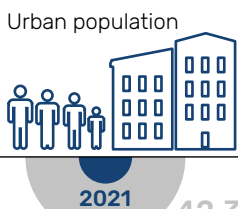
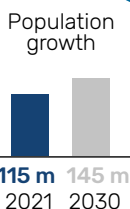
August 2022

Second
most populous
country in Africa



40% Agriculture contribution to total GDP

~75% Agriculture contribution to the employment



Urban population
growing rate
3.8%
per year

Economy
growing rate
avg. 10%
per annum

Aspires by 2025
Lower Middle-
Income Country

Poultry sector Ethiopia



54,000 tons

Total chicken meat production in 2020



73,357 tons

Total egg production in 2020

Number of chickens in commercial poultry sector

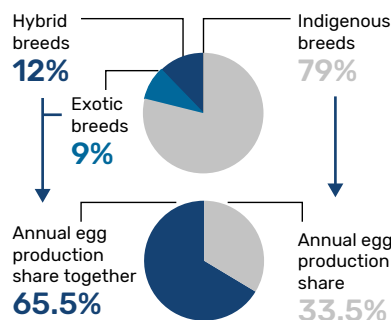


Broiler breeder **71,000**
Layer breeder **87,300**
Dual-purpose parent stock **141,700**

Specialized layer units (2021): **290**

Broiler farms (2021): **30**

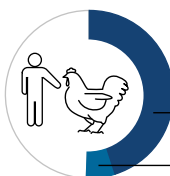
Imported poultry meat (2020): **USD667,000**



Annual egg production share together **65.5%**

Annual egg production share **33.5%**

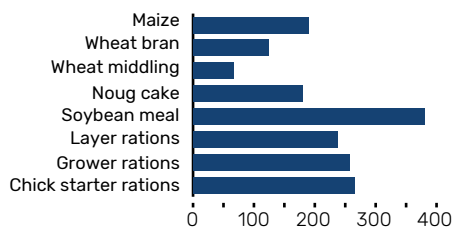
Chickens held by rural households



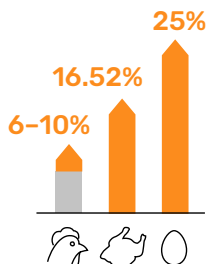
8 million have 1-9 chickens

1 million have 10-49 chickens

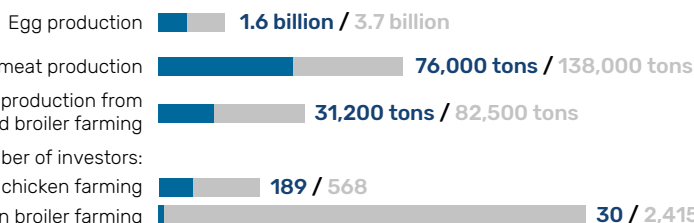
Average price (USD/kg)



Sector growing rates



Government aspirations (2022/2030)



Identified challenges and opportunities in Poultry sector Ethiopia



PREMIX MANUFACTURING

There is a shortage of premix in Ethiopia. Along with issues in quality, the availability of foreign currency to importers can occasionally have an impact on supply. The demand for quality premix is strong within Ethiopia and in adjacent nations.



PRODUCTION OF VET MEDICINES

There are opportunities for investors in the manufacture of veterinary supplies. Favorable circumstances include tax exemptions for the import of raw materials used to make veterinary supplies, a clear and transparent registration procedure by the controlling authority (VDFACA), and a significant demand from consumers looking to buy dependable veterinary products.



MANUFACTURING OF POULTRY EQUIPMENT

Equipment that decreases poultry producers' cost and increases productivity efficiency is in high demand. Manufacturing essential poultry equipment in Ethiopia would offer the market an alternative to imported equipment which is often unavailable due to the limited availability of foreign currency.



CONSULTANCY/EDUCATION SERVICES

There is a demand for knowledge on feed composition, based on Ethiopia's resource availability and taking into account the genetic makeup of the breeds in use. Considering the financial position of farmers, there is an opportunity to work with development partners.

Are you interested in the Ethiopian poultry sector and would you like more information?
Contact us via Ethiopia@traide.org and follow us on [LinkedIn](#).